

# COLLINS TOWNSHIP

Each township has six files containing six sections in each, and one file containing all 36 sections.

Collins01to06.pdf

Collins07to12.pdf

Collins13to18.pdf

Collins19to24.pdf

Collins25to30.pdf

Collins31to36.pdf

CollinsAll36.pdf

The points are listed starting with the point above the SE corner and continuing in a counter-clockwise rotation around the section. This normally begins with the East point, Northeast, then North, but may also include Witness Corners, and/or Meander Corners.

## **Definitions**

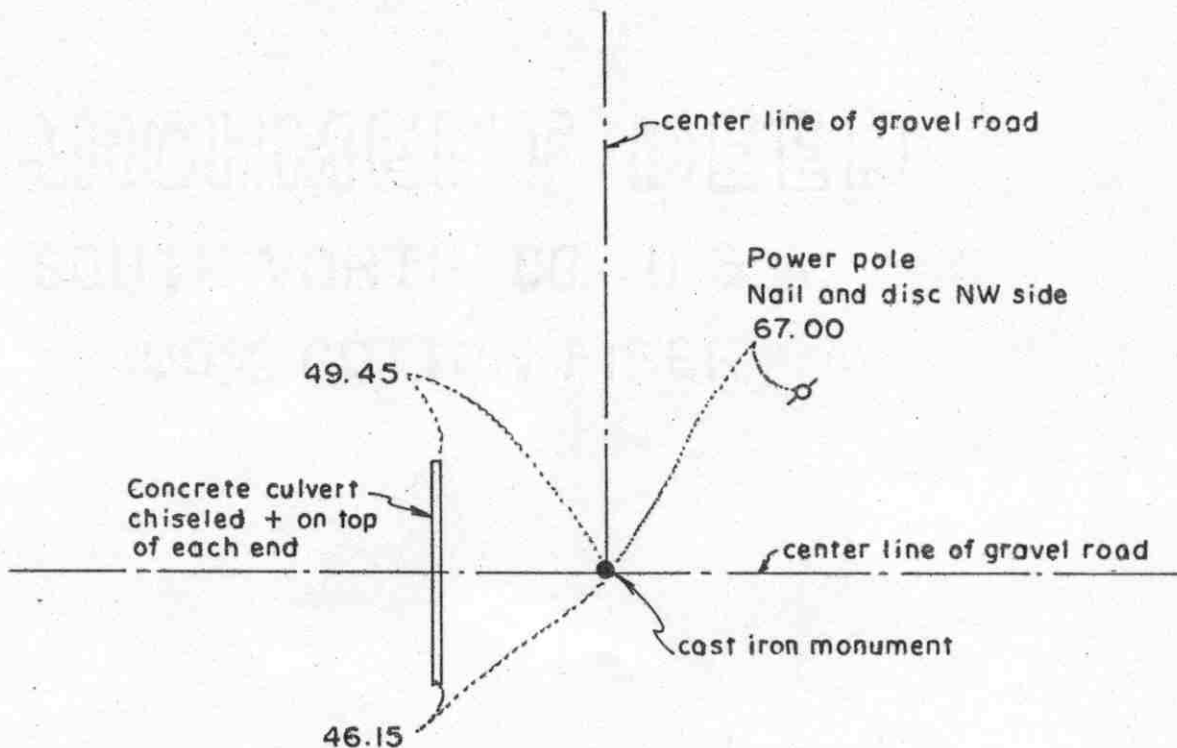
**Witness Corner:** A witness corner “stands in” when the true corner cannot be monumented or occupied because of difficult terrain or obstruction of the corner sight. The witness corner must be on the section line and is usually 5 or 10 chains away from the true corner.

**Meander Corner:** The intersection of a township, range, or section line and the banks of a navigable stream or meandering body of water.

### Certificate of Location of Government Corner



SKETCH OF REFERENCE TIES  
(NO SCALE)



Statement of evidence relative to this corner location on sheet 2

I hereby certify that this document was prepared by me or under my direct supervision.

Willard Pellinen  
 Willard Pellinen  
 McLeod County Surveyor  
 License No. 9626  
 Date 1/15/89

OFFICE OF THE COUNTY RECORDER  
MCLEOD COUNTY, MINNESOTA.

I hereby certify that this document was filed in this office at 1 o'clock P.M. on the 31st day of Jan., 1989.

Carmin Ostlie, County Recorder  
 By \_\_\_\_\_, Deputy  
 Document No. 226706

## Certificate of Location of Government Corner

This corner was originally established by Thomas Simpson of the Government Land Office in 1855. He set the quarter section post in a mound, with trench, pits and charred stake.

In 1895, I.C.Christlieb resurveyed the Township of Collins and he set an iron monument 6 feet north of the true quarter section corner.

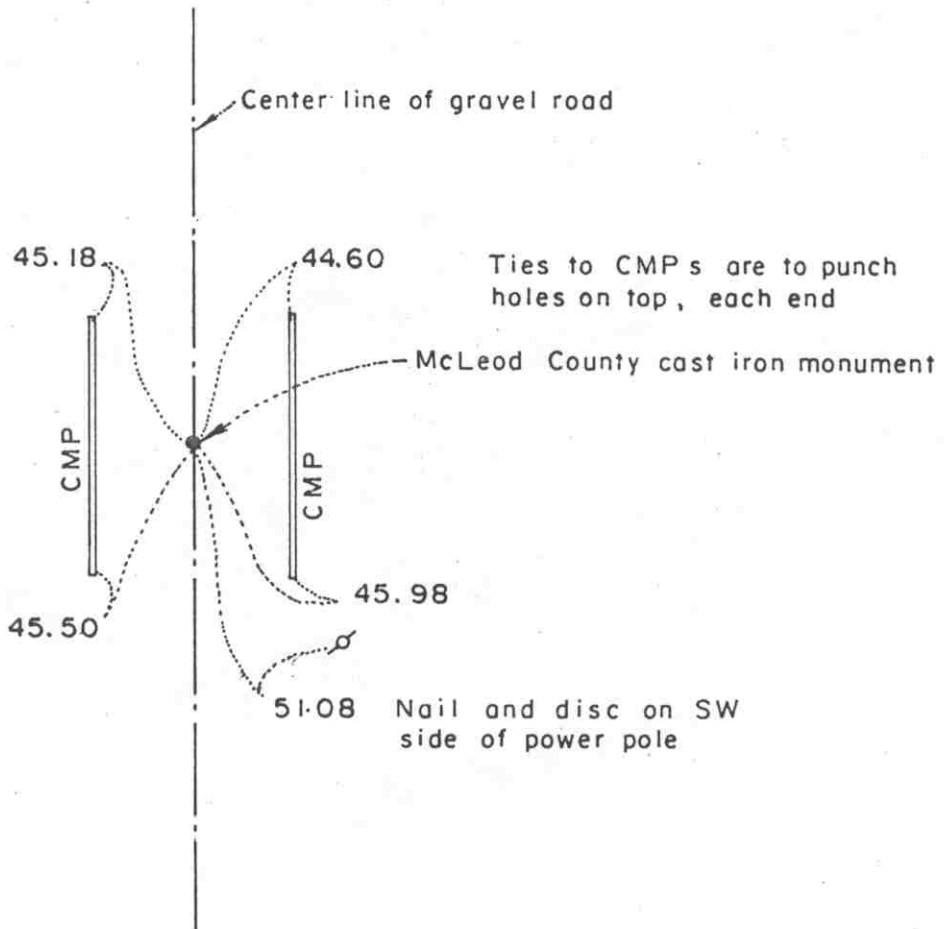
On October 1, 1973, we found an iron pin at the center line intersection of the roads and also found an iron monument 6 feet north of the iron pin. We set a McLeod County cast iron monument at the location of the iron pin and took reference ties.

We feel this corner has been perpetuated by the iron pin and the iron monument set by Christlieb .

# Certificate of Location of Government Corner



SKETCH OF REFERENCE TIES  
(NO SCALE)



Statement of evidence relative to this corner location on sheet 2

I hereby certify that this document was prepared by me or under my direct supervision.

Willard Pellinen  
Willard Pellinen  
McLeod County Surveyor  
License No. 9626

Date June 19, 1988

OFFICE OF THE COUNTY RECORDER  
MCLEOD COUNTY, MINNESOTA.

I hereby certify that this document was filed in this office at 8 o'clock A.M. on the 18th day of October, 19 88.

Carmen Ostlie, County Recorder

By \_\_\_\_\_, Deputy

Document No. 225069

## *Certificate of Location of Government Corner*

This corner was originally established by the government in 1855 and was monumented by a wood post in a mound of earth. No ties recorded by the government surveyor.

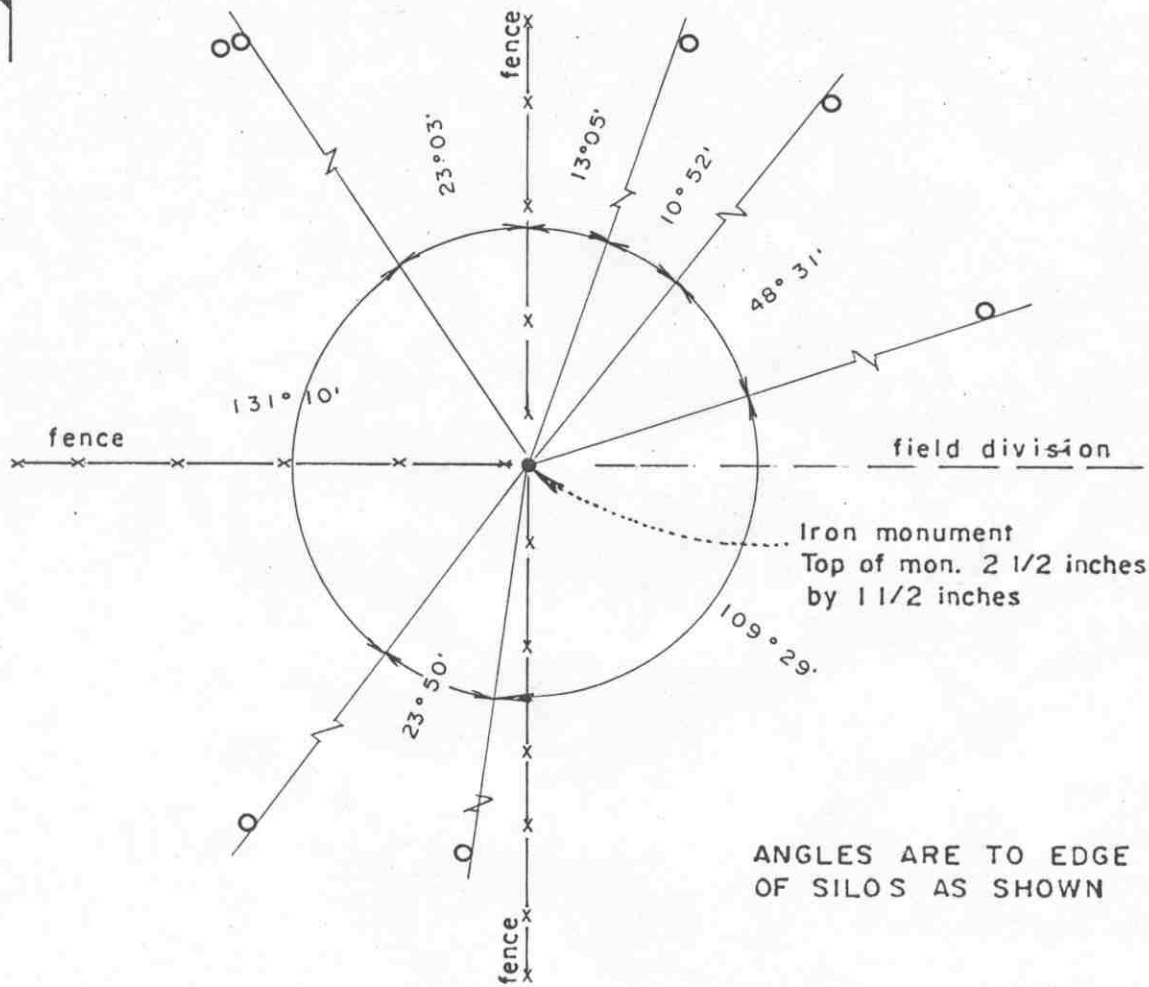
In 1895 I.C.Christlieb resurveyed the Township of Collins and his notes show a stone at this corner.

In 1973 McCombs Knutson Associates found a stone and a 2½ inch square iron monument at the center line of a gravel road and a fence running east. MKA (Dickman Knutson, County Surveyor) set a McLeod County cast iron monument over the found iron monument and took available ties.

We feel the iron monument found by MKA was set by Christlieb in 1895 and has perpetuated the true northeast corner of Section 7.

# Certificate of Location of Government Corner

SKETCH OF REFERENCE TIES  
(NO SCALE)



ANGLES ARE TO EDGE  
OF SILOS AS SHOWN

Statement of evidence relative to this corner location on sheet 2

I hereby certify that this document was prepared by me or under my direct supervision.

Willard Pellinen

Willard Pellinen  
McLeod County Surveyor  
License No. 9626

Date June 28, 1988

OFFICE OF THE COUNTY RECORDER  
MCLEOD COUNTY, MINNESOTA.

I hereby certify that this document was filed in this office at 8 o'clock A.M. on the 18th day of October, 19 88.

Arman Ostlie, County Recorder

By \_\_\_\_\_, Deputy

Document No. 225070

## Certificate of Location of Government Corner

This corner was originally established by the Government in 1855 and was monumented by a wood post in a mound.

In 1895 I.C.Christlieb remonumented Collins Township. His notes don't show what if anything was set at this corner.

In 1975 McCombs-Knutson Associates found an iron monument such as Christlieb set in Collins Township. He set iron monuments with a  $2\frac{1}{2}$  inch by  $1\frac{1}{2}$  inch top at the quarter corners. Mrs John Klabunde, 80 years old in 1975, in the SE $\frac{1}{2}$  of Section 6 all her life, says this is the correct south quarter corner of Section 6. Mr. Rath, 37, in the NE $\frac{1}{4}$  of Section 7 all his life, agrees.

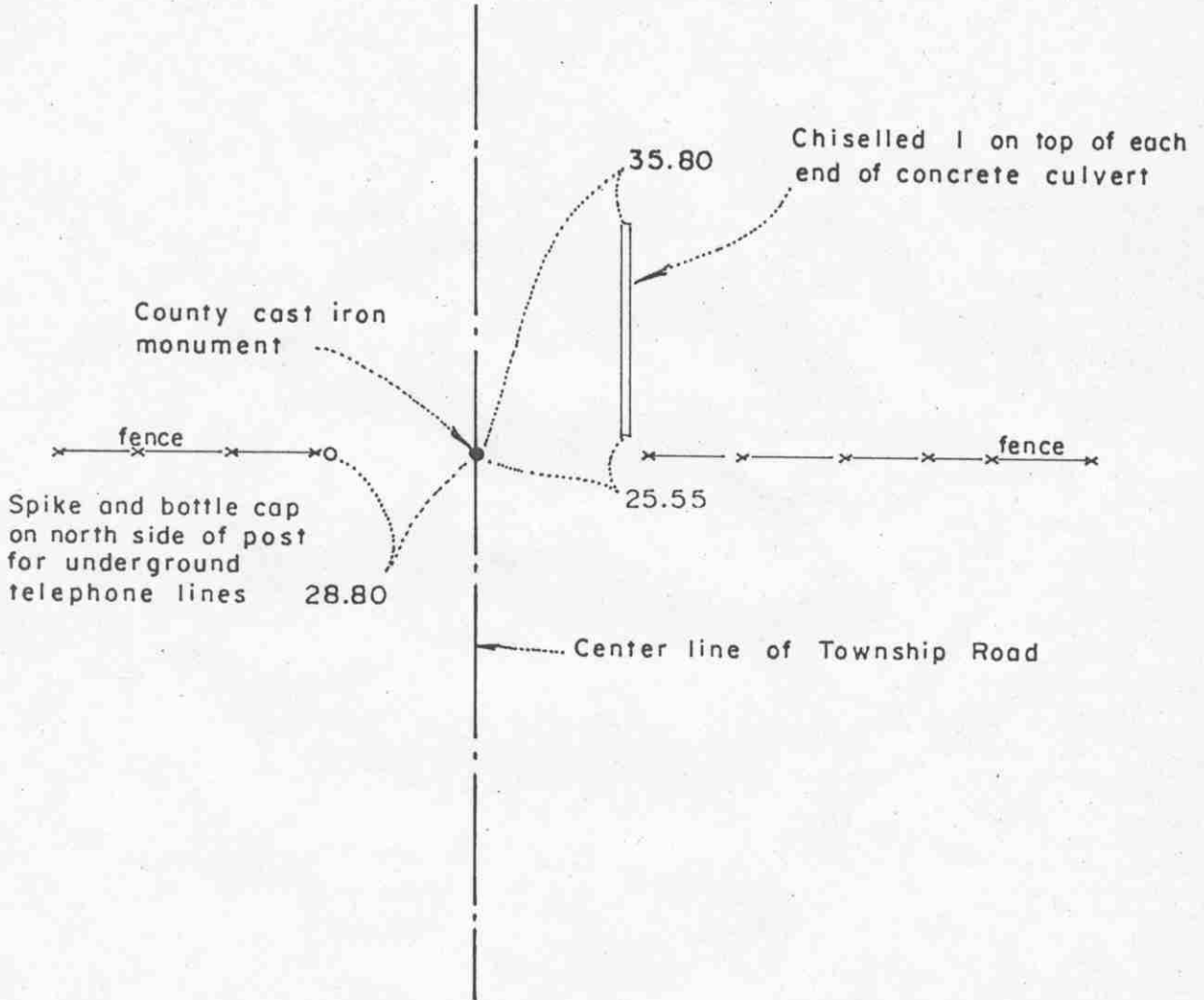
We feel this is the true north quarter corner of Section 6, as perpetuated by the fence intersection and the iron monument.

# Certificate of Location of Government Corner



## SKETCH OF REFERENCE TIES

(NO SCALE)



Statement of evidence relative to this corner location on sheet 2

I hereby certify that this document was prepared by me or under my direct supervision.

Willard Pellinen  
Willard Pellinen  
McLeod County Surveyor  
License No. 9626

Date July 1, 1988

OFFICE OF THE COUNTY RECORDER  
MCLEOD COUNTY, MINNESOTA.

I hereby certify that this document was filed in this office at 8 o'clock A.M. on the 18th day of October, 1988.

Carman Postle, County Recorder  
By \_\_\_\_\_, Deputy

Document No. 225071



Northwest      corner, Section 7, Township 115 North, Range 30 West

## Certificate of Location of Government Corner

This corner was originally established by John Ryan of the Government Land Office. He deposited charcoal, dug pits, built a mound and planted osage orange seeds at corners of the mound. This was established in 1855.

In 1895, I.C.Christlieb resurveyed Collins Township and his notes show a stone at this corner.

In June 1, 1981, we found a  $\frac{1}{2}$  inch diameter iron pipe on the center line of road, fences east and west.

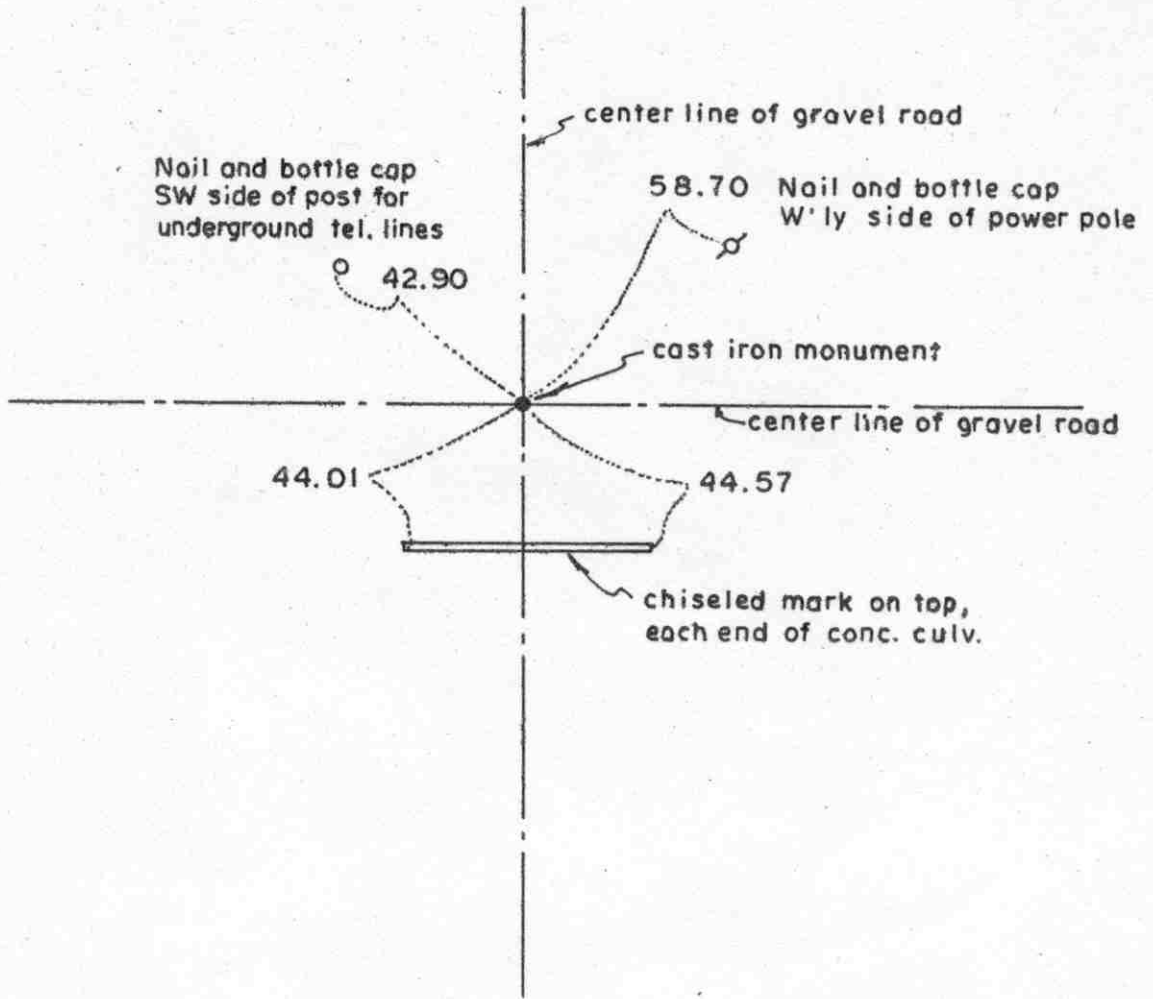
June 11, 1981, We dug for corner and found a stone below the iron pipe.

We feel this is the true location of the northwest corner of Section 7, as perpetuated by the road, the fences and the iron pipe and stone, and on August 17, 1981, we set a county cast iron monument.

# Certificate of Location of Government Corner



SKETCH OF REFERENCE TIES  
(NO SCALE)



Statement of evidence relative to this corner location on sheet 2

I hereby certify that this document was prepared by me or under my direct supervision.

Willard Pellinen  
Willard Pellinen  
McLeod County Surveyor  
License No. 9626

Date 1/1/89

OFFICE OF THE COUNTY RECORDER  
MCLEOD COUNTY, MINNESOTA.

I hereby certify that this document was filed in this office at 1 o'clock P.M. on the 31st day of Jan 1989.

Carmen O'Brien, County Recorder  
By \_\_\_\_\_, Deputy

Document No. 226707

## Certificate of Location of Government Corner

This corner was originally established by John Ryan of the Government Land Office in 1855. He set post, deposited charcoal, dug pits and trench, built mound, and planted osage orange seeds at the corners of the mound.

In 1895, I.C.Christlieb resurveyed the Township of Collins and set an iron monument at this corner.

On July 9, 1981, we found the monument set by Christlieb down 2.7 feet below the surface of the gravel road, took reference ties, and set a McLeod County cast iron monument over the found monument.

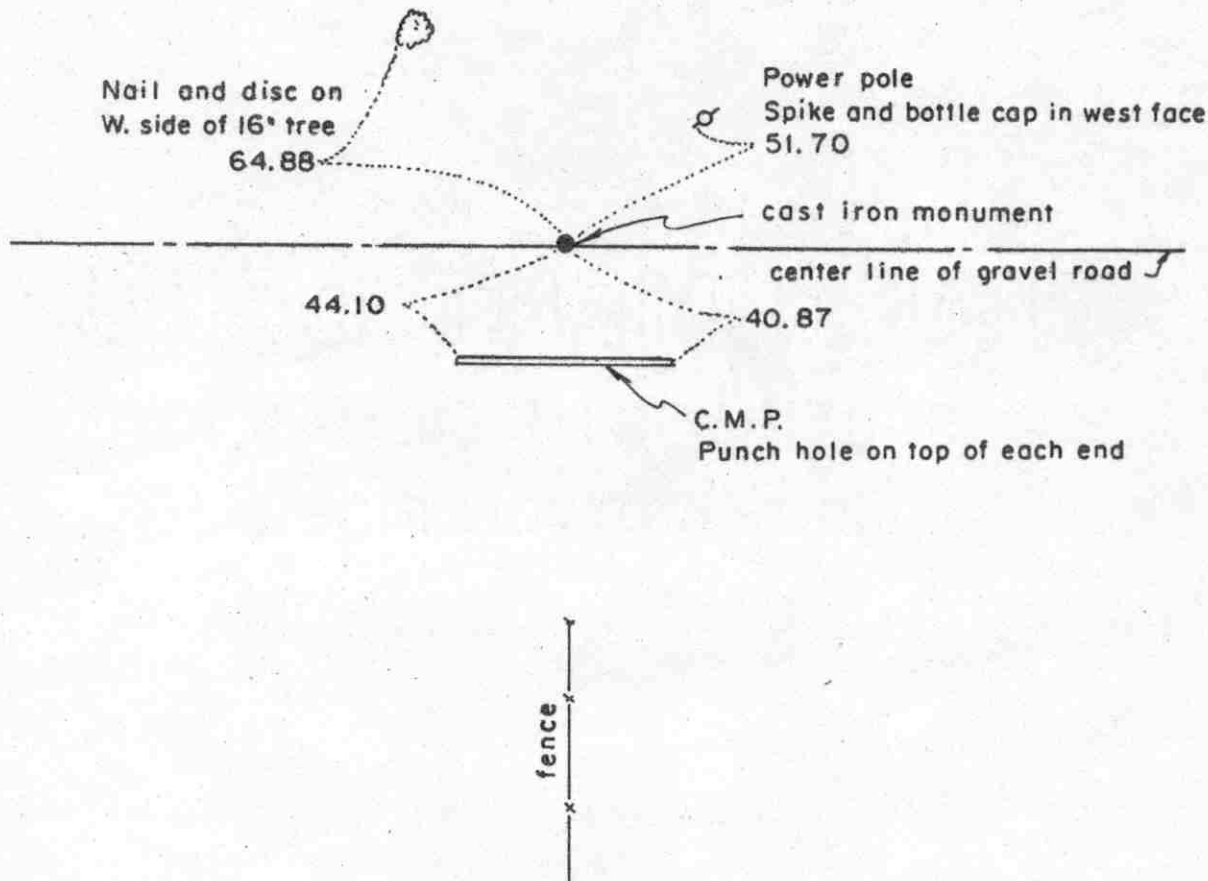
We feel this is the correct location of the west quarter of section as perpetuated by the monument set by Christlieb.

# Certificate of Location of Government Corner



## SKETCH OF REFERENCE TIES

(NO SCALE)



Statement of evidence relative to this corner location on sheet 2

I hereby certify that this document was prepared by me or under my direct supervision.

Willard Pellinen

Willard Pellinen  
McLeod County Surveyor  
License No. 9626

Date 1/1/89

OFFICE OF THE COUNTY RECORDER  
MCLEOD COUNTY, MINNESOTA.

I hereby certify that this document was filed in this office at 1 o'clock P.M. on the 31st day of Jan., 19 89.

Carmen Ostlie, County Recorder  
By \_\_\_\_\_, Deputy

Document No. 226708

## Certificate of Location of Government Corner

This corner was originally established by the Government Land Office in 1855 (Thomas Simpson, surveyor). He set a post in mound of earth, dug trench and pits, set charred stake and planted osage orange seeds northeast and southwest.

In 1895 I.C.Christlieb resurveyed the Township of Collins and set an iron monument at the east quarter corner.

On October 1, 1973, we found the monument set by Christlieb down 2 feet below the road surface, took reference ties and set a McLeod County cast iron monument over the found monument.

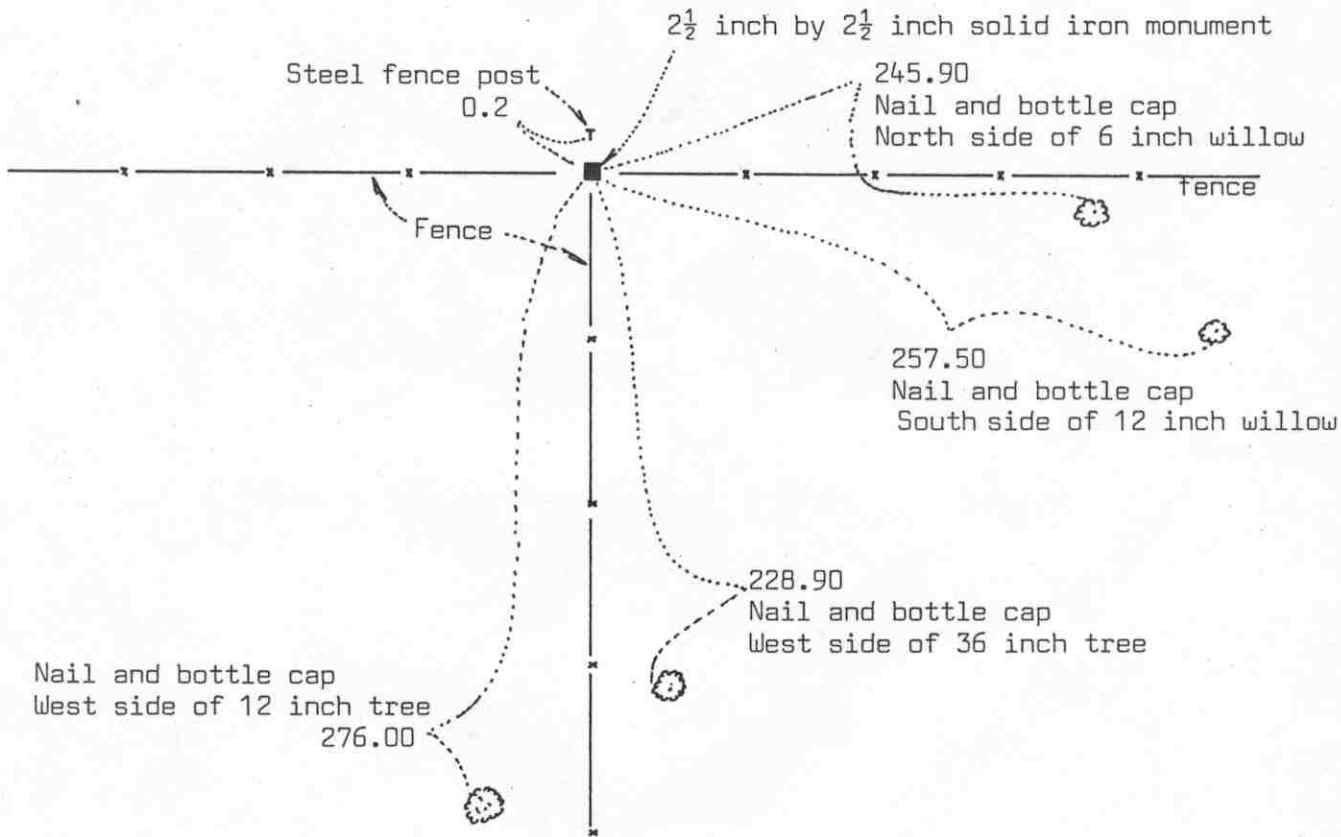
We accept the monument set by Christlieb as having perpetuated the true location of the east quarter corner of Section 8.

# Certificate of Location of Government Corner



## SKETCH OF REFERENCE TIES

(NO SCALE)



Statement of evidence relative to this corner location on sheet 2

I hereby certify that this document was prepared by me or under my direct supervision.

Willard Pellinen

Willard Pellinen  
McLeod County Surveyor  
License No. 9626

Date September 2, 1987

OFFICE OF THE COUNTY RECORDER  
MCLEOD COUNTY, MINNESOTA.

I hereby certify that this document was filed in this office at 8 o'clock A.M. on the 18th day of October, 1988.

Carmen Potlie, County Recorder

By \_\_\_\_\_, Deputy

Document No. 225073

## *Certificate of Location of Government Corner*

This corner was established in 1855 by Thomas Simpson, Government Surveyor, and was monumented by a wood post in a mound of earth.

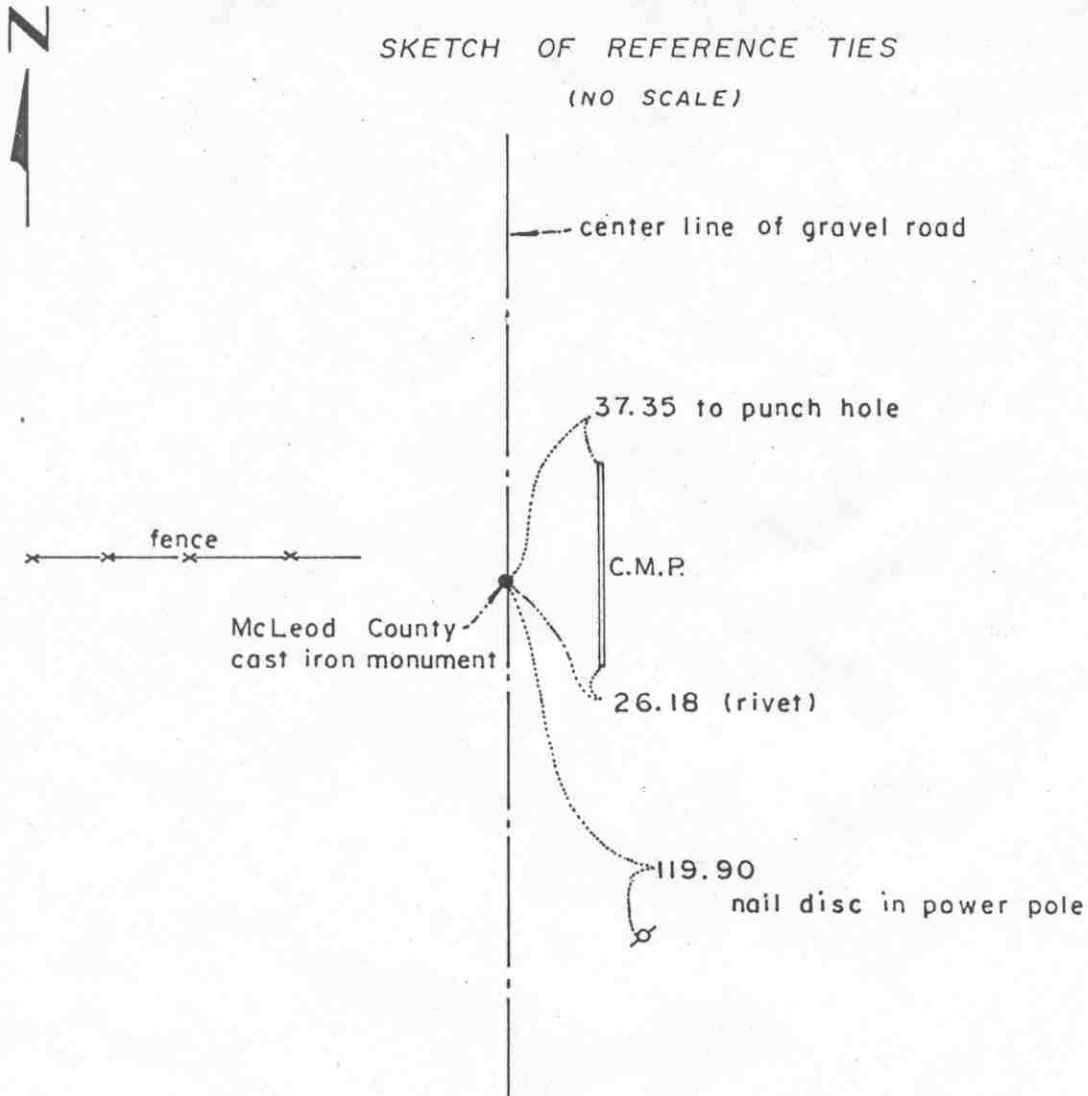
In 1895, I.C.Christlieb remonumented Collins Township and set an iron monument at this corner.

On March 3, 1976, McCombs Knutson Associates (Dickman Knutson, County Surveyor) found the 2½ inch square iron monument set by Christlieb, and took reference ties.

We will accept this monument as set by Christlieb as the true northeast corner of Section 8.

### Certificate of Location of Government Corner

SKETCH OF REFERENCE TIES  
(NO SCALE)



Statement of evidence relative to this corner location on sheet 2

I hereby certify that this document was prepared by me or under my direct supervision.

Willard Pellinen

Willard Pellinen  
McLeod County Surveyor  
License No. 9626

Date June 20, 1988

OFFICE OF THE COUNTY RECORDER  
MCLEOD COUNTY, MINNESOTA.

I hereby certify that this document was filed in this office at 8 o'clock A.M. on the 18th day of October, 19 88.

Carmin Ostlie, County Recorder

By \_\_\_\_\_, Deputy

Document No. 225072



## Certificate of Location of Government Corner

This corner was originally established in 1855 by Thomas Simpson, government surveyor, and was monumented by a wood post in a mound of earth. No ties were recorded.

In 1895 I.C.Christlieb resurveyed the Township of Collins and set an iron monument at the north quarter corner of Section 8.

In October, 1973, McCombs Knutson Associates found the iron monument set by Christlieb and set a County cast iron monument over the found monument.

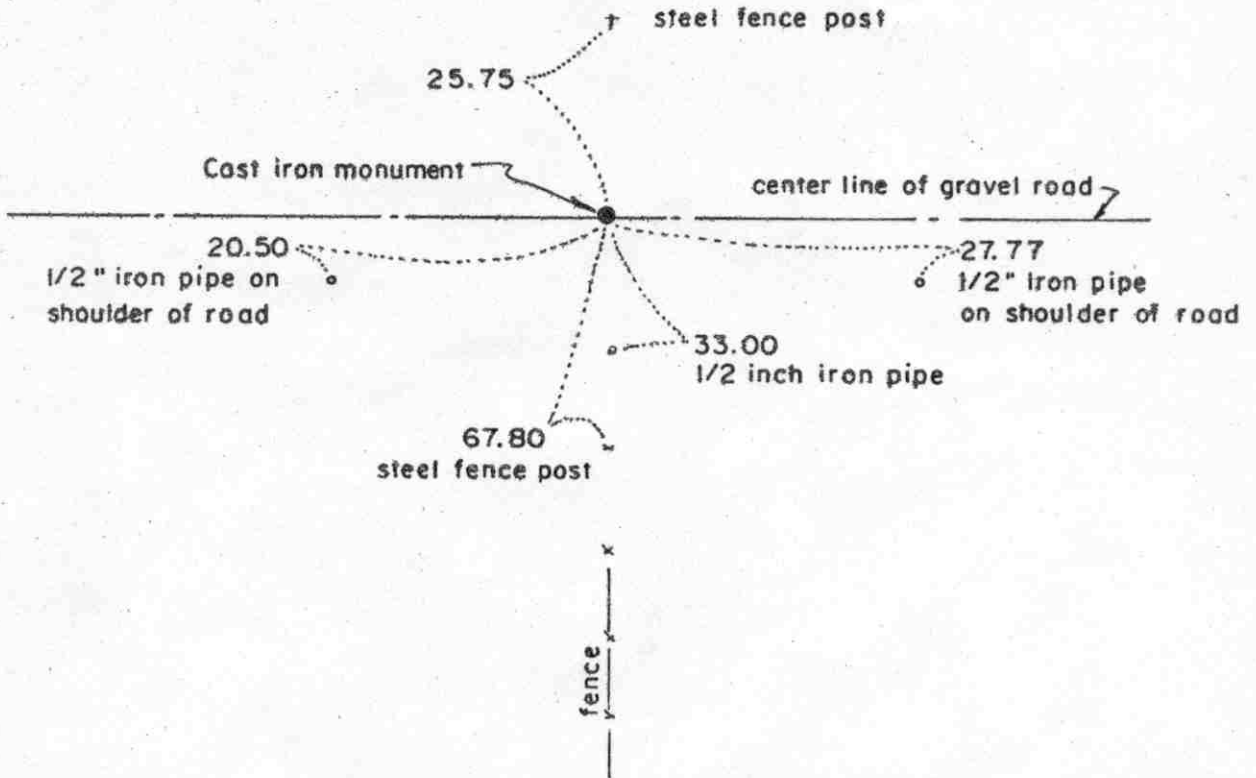
In October, 1987, we measured the north line of the Northeast Quarter of Section 8 and had a distance of 2648.96 feet compared to a distance of 2647 by Christlieb in 1895.

We feel the monument set by Christlieb and found by MKA has perpetuated the original government corner.

# Certificate of Location of Government Corner



SKETCH OF REFERENCE TIES  
(NO SCALE)



Statement of evidence relative to this corner location on sheet 2

I hereby certify that this document was prepared by me or under my direct supervision.

Willard Pellinen  
Willard Pellinen  
McLeod County Surveyor  
License No. 9626  
Date 1/2/89

OFFICE OF THE COUNTY RECORDER  
MCLEOD COUNTY, MINNESOTA.

I hereby certify that this document was filed in this office at 1 o'clock P.M. on the 31st day of Jan, 19 89.

Carmen Cottler, County Recorder  
By \_\_\_\_\_, Deputy  
Document No. 226709

## Certificate of Location of Government Corner

This corner was originally established by the Government Land Office in 1855 (Thomas Simpson, surveyor). He set post in mound with trench and pits, charred stake and planted osage orange seeds northeast and southwest of corner.

In 1895 I.C. Christlieb resurveyed Collins Township. His map doesn't show that he set anything at this corner but he had distances to the northeast and southeast corners of Section 9.

In 1978 we measured the east line of Section 9 and dug for the east quarter corner, but found nothing. F. Koenig, 82 years old, in the Northwest Quarter of Section 10, said the fence on the south side of the road is on the Section line and used to extend all the way to the right of way of the road. We set an iron pipe on the northerly extension of the fence on a proration of the 1895 distances by Christlieb. Our distance to the northeast corner is 2657.76 feet and to the southeast corner is 2652.86 to the southeast corner compared to 2652.9 and 2648 by Christlieb. Most of our measured distances are longer than Christlieb had in Collins Township. This corner falls in the center of the gravel road. Mr Koenig agrees our corner is in the correct location. On July 7, 1980 we replaced the iron pipe with a McLeod County cast iron monument and took new reference ties.

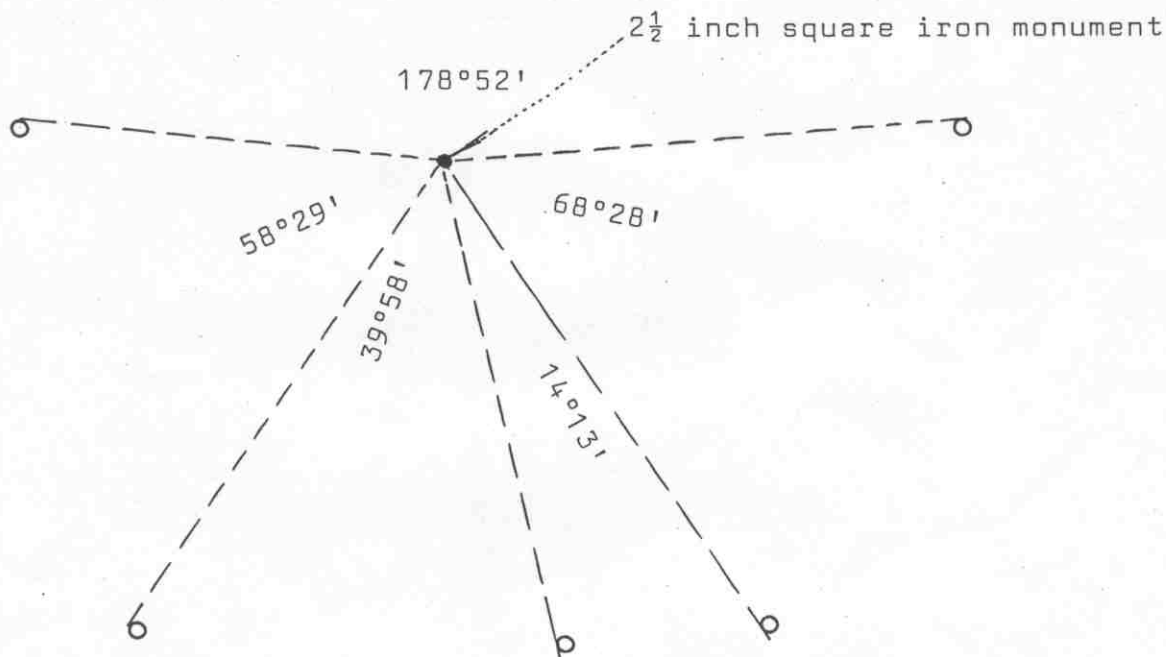
We feel this was an obliterated corner whose location has been perpetuated by the fence, road and distances by Christlieb in 1895.

# Certificate of Location of Government Corner



SKETCH OF REFERENCE TIES  
(NO SCALE)

Angles are to edge of silo as shown



Statement of evidence relative to this corner location on sheet 2

I hereby certify that this document was prepared by me or under my direct supervision.

Willard Pellinen  
Willard Pellinen  
McLeod County Surveyor  
License No. 9626

Date September 4, 1987

OFFICE OF THE COUNTY RECORDER  
MCLEOD COUNTY, MINNESOTA.

I hereby certify that this document was filed in this office at 8 o'clock A.M. on the 18th day of October, 19 88.

Carmen Ostlie, County Recorder  
By \_\_\_\_\_, Deputy

Document No. 225074

## *Certificate of Location of Government Corner*

This corner was established by the Government in 1855 and was monumented by a wood post in a mound of earth.

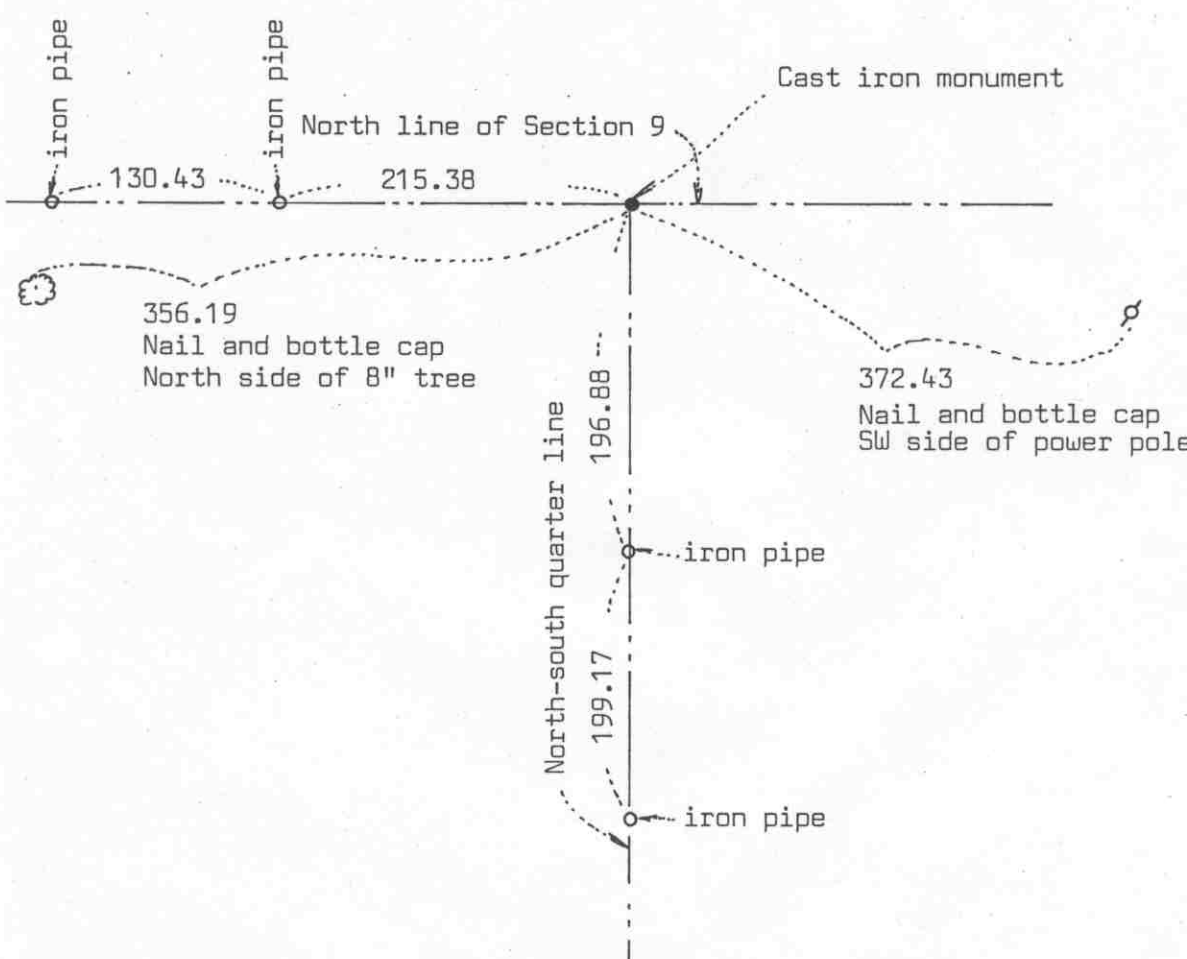
In 1895, I. C. Christlieb remonumented Collins Township and set an iron monument at this corner.

In December, 1973, McCombs-Knutson Associates found the iron monument set by Christlieb and took angular reference ties.

We feel this corner as set by Christlieb in 1895 has perpetuated the true northeast corner of Section 9.

# Certificate of Location of Government Corner

SKETCH OF REFERENCE TIES  
(NO SCALE)



Statement of evidence relative to this corner location on sheet 2

I hereby certify that this document was prepared by me or under my direct supervision.

Willard Pellinen

Willard Pellinen  
McLeod County Surveyor  
License No. 9626

Date September 3, 1987

OFFICE OF THE COUNTY RECORDER  
MCLEOD COUNTY, MINNESOTA.

I hereby certify that this document was filed in this office at 8 o'clock A.M. on the 18th day of October, 1988.

Carmin Ostlie, County Recorder

By \_\_\_\_\_, Deputy

Document No. 225075

## Certificate of Location of Government Corner

This corner was established in 1855 by Thomas Simpson, Government Surveyor, and was monumented by a wood post in a mound of earth.

In 1895, I.C.Christlieb monumented Collins Township and set an iron monument at this corner.

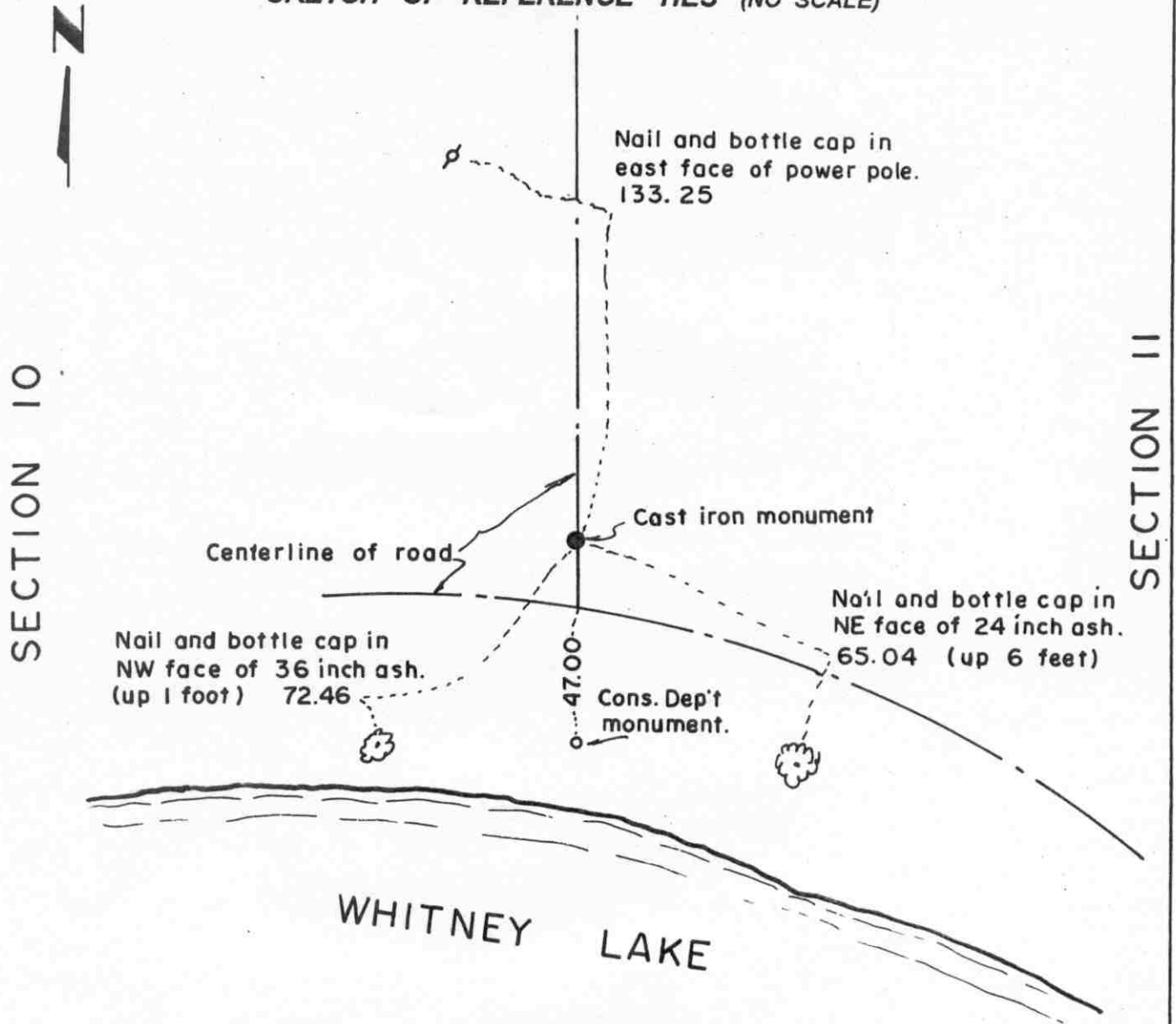
In December 1975 McCombs-Knutson Associates measured the north line of Section and searched for the monument set by Christlieb. The quarter corner location falls in a plowed field and the monument has been plowed out. MKA set the quarter corner on a straight line between the section corners on a proration of 1895 distances by Christlieb to the section corners. Christlieb distance to the northwest corner was 2651.5 feet. MKA distance was 2657.50 feet. Christlieb distance to northeast corner was 2648.3 and MKA distance was 2654.30. MKA set a  $\frac{1}{2}$  inch diam. iron pipe at the corner and took reference ties.

We feel this location is the true north quarter corner of Section 9, and on August 28, 1979 we set a cast iron monument and additional reference ties.

# Certificate of Location of Government Corner

MEANDER            corner, Section 10, Township 115 North, Range 30 West

## SKETCH OF REFERENCE TIES (NO SCALE)



**Statement of evidence relative to this corner location on sheet 2**

I hereby certify that this document was prepared by me or under my direct supervision.

Willard Pellinen  
 Willard Pellinen  
 McLeod County Surveyor  
 License No. 9626.

Date Dec. 19, 1995

**OFFICE OF THE COUNTY RECORDER  
 MCLEOD COUNTY, MINNESOTA**

I hereby certify that this document was filed in this office at 9 o'clock A. M. on the 9th day of January, 19 96.

Carmen Estlie Holder, County Recorder

By Charleen Englmann, Deputy.

Document No. 270189



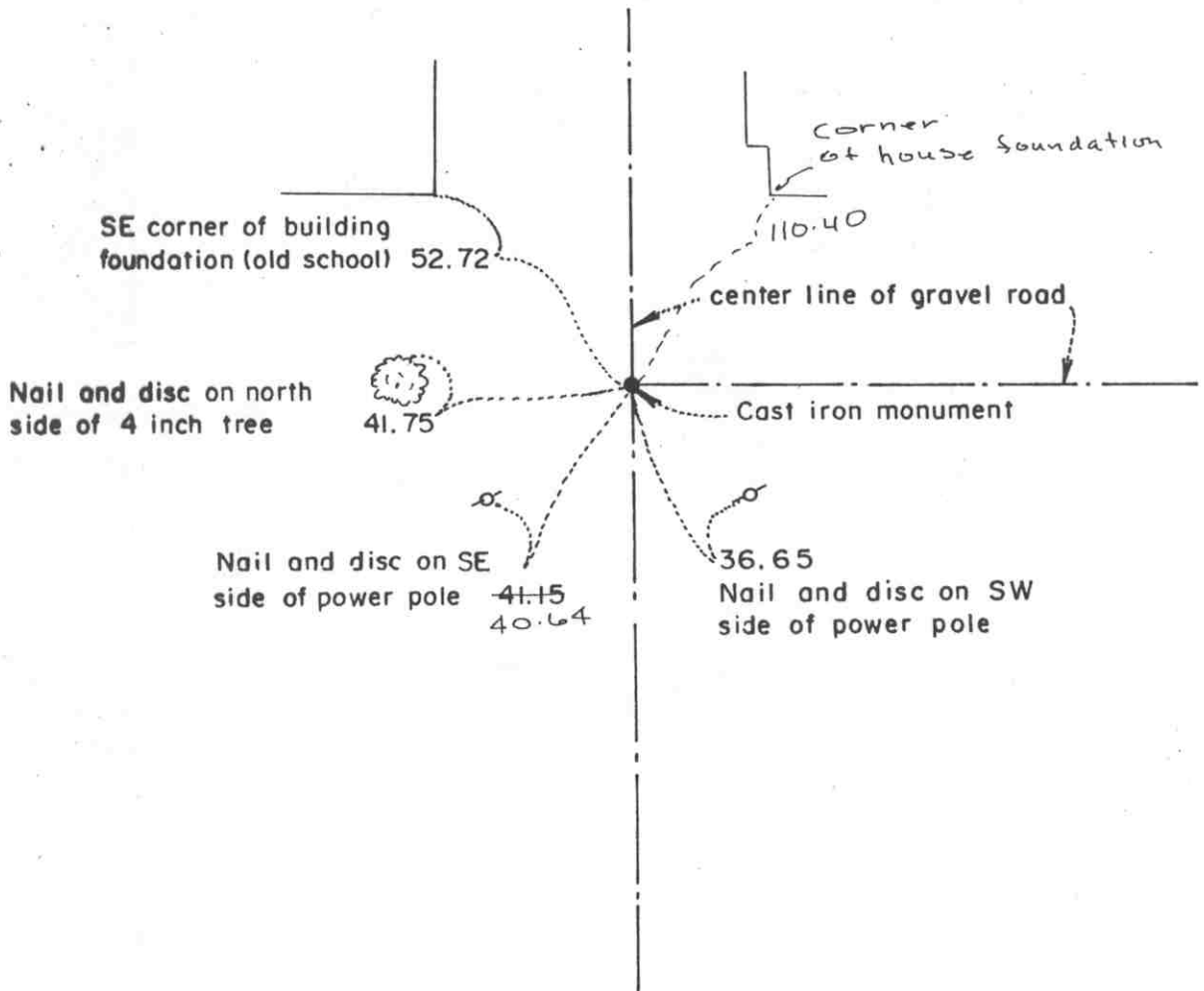
***Certificate of Location of Government Corner  
Meander Corner, Section 10, Township 115 North, Range 30 West  
Along east line of Section 10, north of Whitney Lake.***

*1983. We set a cast iron monument at the prorated government distance from the northeast corner of Section to the southeast corner of Section 10. The east quarter corner of Section 10 falls in the lake. We set the meander corner along the center line of the north-south road which has been accepted as the section line by adjoining land owners. We found a Conservation Department monument, which was set in 1958, a distance of 47 feet south of our monument. The meander corner falls 20.95 feet west of a straight line between the section corners.*

# Certificate of Location of Government Corner



SKETCH OF REFERENCE TIES  
(NO SCALE)



Statement of evidence relative to this corner location on sheet 2

I hereby certify that this document was prepared by me or under my direct supervision.

Willard Pellinen  
Willard Pellinen  
McLeod County Surveyor  
License No. 9626

Date June 22, 1987

OFFICE OF THE COUNTY RECORDER  
MCLEOD COUNTY, MINNESOTA.

I hereby certify that this document was filed in this office at 9 o'clock A.M. on the 1st day of Aug, 1992.

Carmen Ostlie, County Recorder

By \_\_\_\_\_, Deputy

Document No. 247414

## *Certificate of Location of Government Corner*

This corner was established by the Government in 1855 and was monumented by a wood post in a mound of earth.

In 1895, I.C. Christlieb, county surveyor, remonumented Collins Township and set a  $2\frac{1}{2}$  inch by  $2\frac{1}{2}$  inch by 4 foot long iron monument at this corner.

In June, 1974, McKombs-Knutson Associates dug for this corner and found a stone down 2 feet below the road surface. Below this stone they found the monument set by Christlieb. They set a McLeod County cast iron monument over this found monument and took reference ties.

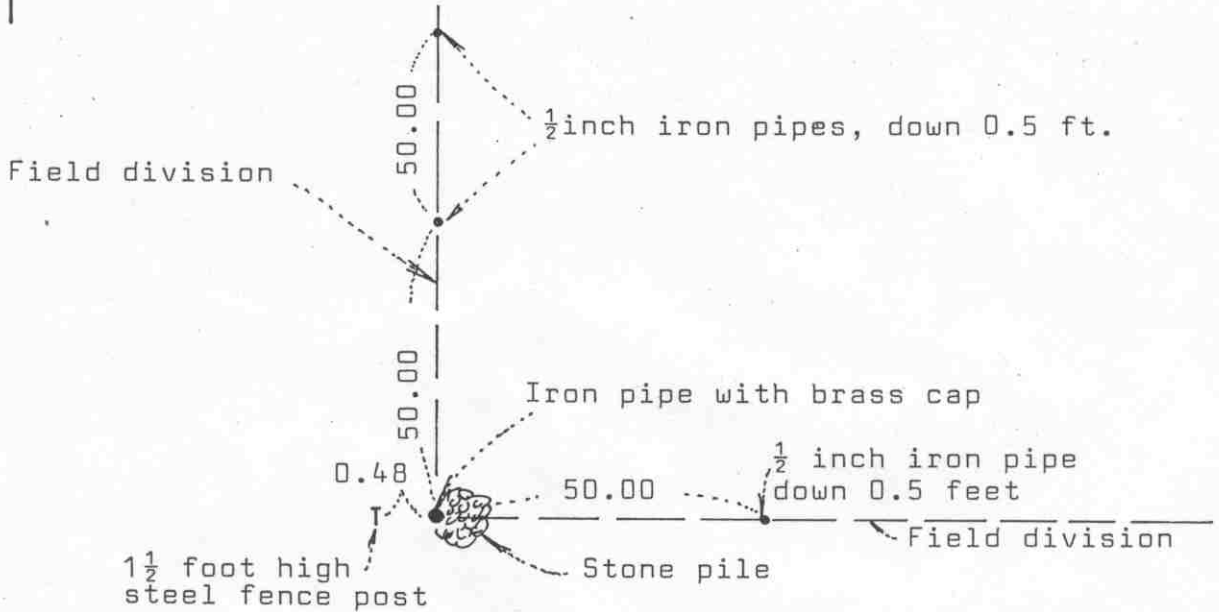
We believe the monument set by Christlieb has perpetuated the location of the original Government corner.

NOVEMBER 27, 1991. We found the monument in good condition down 10 inches below the surface of the gravel road and took additional reference ties.

# Certificate of Location of Government Corner



SKETCH OF REFERENCE TIES  
(NO SCALE)



Statement of evidence relative to this corner location on sheet 2

I hereby certify that this document was prepared by me or under my direct supervision.

Willard Pellinen  
 Willard Pellinen  
 McLeod County Surveyor  
 License No. 9626  
 Date September 12, 1987

OFFICE OF THE COUNTY RECORDER  
 MCLEOD COUNTY, MINNESOTA.

I hereby certify that this document was filed in this office at 8 o'clock A.M. on the 18th day of October, 1988.

Carmen Petlie, County Recorder  
 By \_\_\_\_\_, Deputy  
 Document No. 225077

North Quarter corner, Section 10, Township 115 North, Range 30 West

## *Certificate of Location of Government Corner*

This corner was established by the Government in 1855 and was monumented by a wood post in a mound of earth.

In 1855 I.C. Christlieb monumented Collins Township and his map shows an iron monument at this corner  $\frac{1}{2}$  way between the section corners.

In April, 1981, we found an iron pipe with a brass cap  $\frac{1}{2}$  way between the section corners. This is not the monument set by Christlieb ( he set solid iron monuments) but is a monument probably set by Carlisle Madsen sometime between 1923 and 1931 while he was the McLeod County Surveyor. He set monuments such as this.

We feel this monument has perpetuated the true north quarter of Section 10.

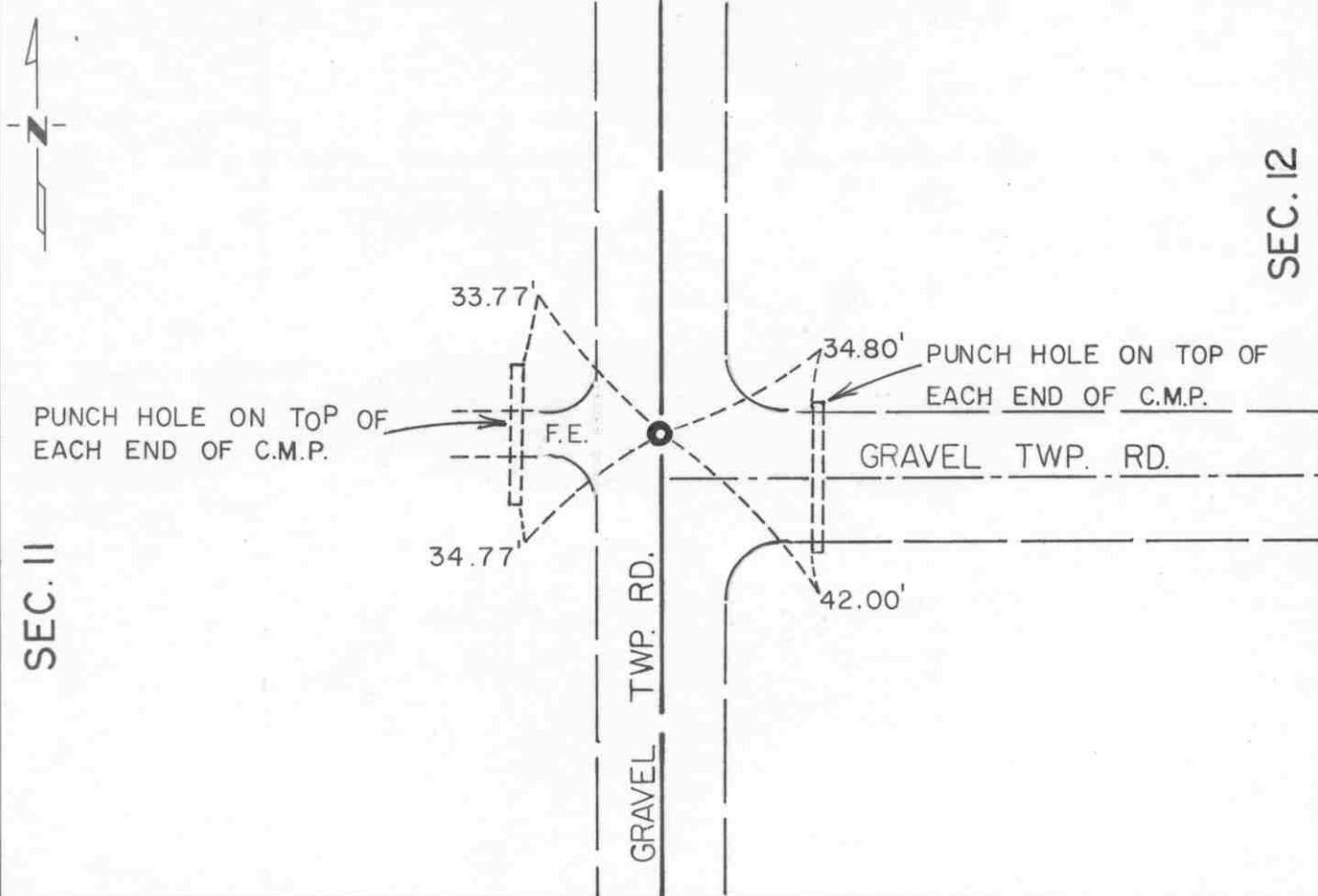
# CERTIFICATE OF LOCATION OF GOVERNMENT CORNER

East Quarter \_\_\_\_\_ Corner of Section 11, Township 115 N, Range 30 W, 5th P.M.  
 STATE OF MINNESOTA, County of McLeod

At the corner location shown on the sketch:

- On Apr. 13, 1990 found a cast iron monument about 4" below the road surface  
DATE
- left monument as found,  lowered monument,  removed monument (explain)
- On \_\_\_\_\_ placed a \_\_\_\_\_  
DATE

SKETCH OF REFERENCE TIES



Statement of evidence relative to this corner location is on back of page.

I hereby certify that this document and the data contained herein was prepared by me or under my direct supervision.

Robert J. Jans 8-19-91  
SIGNATURE DATE  
 Registration No. 11864  
 Land Surveyor,  Professional Engineer  
 County Surveyor,  County Engineer

OFFICE OF THE COUNTY RECORDER  
 County of McLeod

I hereby certify that this document was filed in the Co. Recorders office at 2 P.M. on the 18th day of Apr A.D., 1991  
 County Recorder Armen Ostlie  
 By \_\_\_\_\_, Deputy  
 DOCUMENT NO. 241020

Statement of Evidence:

East Quarter Corner Section 11, T 115 N, R 30 W

- 1855 - The original Public Land Survey was completed by Thomas Simpson. A wood post was set over a charred stake in a dirt mound. Trenches and pits were dug to build the mound. Osage orange was planted at the southwest and northeast corners of the mound.
- 1895 - I. C. Christlieb, McLeod County Surveyor, set an iron monument at the corner.
- 1975 - Willard Pellinen, McLeod County Surveyor, dug for the corner and found the iron monument set by Christlieb. A McLeod County cast iron monument was set directly above the found monument. Reference ties were set.

Christlieb's distances to the southeast and northeast corners of the section were both 2649.5 feet. The 1975 distances were 2649.74 feet to the southeast corner and 2651.29 feet to the northeast corner.

- 1990 - R. C. Jones, Registered Land Surveyor with Mn/DOT, found the cast iron monument about 4" below the road surface. All the reference ties were recovered.

The cast iron monument is accepted as the corner location because the iron monument directly below it was probably set according to evidence of the original Public Land Survey corner. It is at the centerline of a north/south road.

For additional information, contact the Mn/DOT Surveys Section at Willmar, Mn 56201.

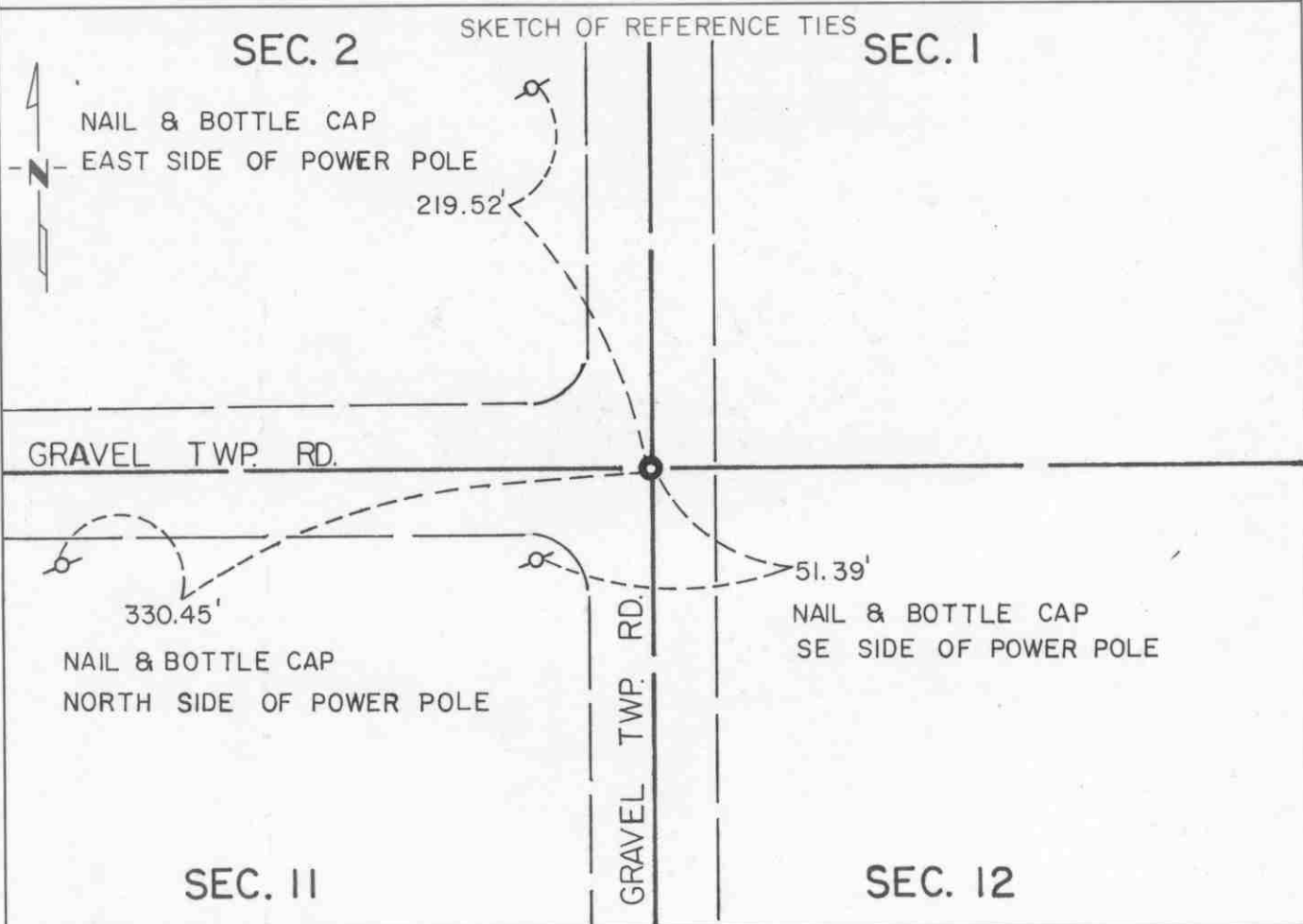
# CERTIFICATE OF LOCATION OF GOVERNMENT CORNER

Northeast Corner of Section 11, Township 115 N, Range 30 W, 5th P.M.

STATE OF MINNESOTA, County of McLeod

At the corner location shown on the sketch:

- On Apr. 13, 1990 found a cast iron monument about 4" below the road surface  
DATE
- left monument as found,  lowered monument,  removed monument (explain)
- On \_\_\_\_\_ placed a \_\_\_\_\_  
DATE



Statement of evidence relative to this corner location is on back of page.

I hereby certify that this document and the data contained herein was prepared by me or under my direct supervision.

Kelut Jans 8-19-91  
SIGNATURE DATE

Registration No. 11864  
 Land Surveyor,  Professional Engineer  
 County Surveyor,  County Engineer

OFFICE OF THE COUNTY RECORDER  
 County of McLeod

I hereby certify that this document was filed in the Co. Recorders office at 2 P .M. on the 18th day of Aug A.D., 1991

County Recorder Carmen Ostlie  
 By \_\_\_\_\_, Deputy  
 DOCUMENT NO. 241019



Statement of Evidence:

Northeast Corner Section 11, T 115 N, R 30 W

- 1855 - The original Public Land Survey was completed by Thomas Simpson. A wood post was set over a charred stake in a dirt mound to mark the corner. Trenches and pits were dug to build the mound. Osage orange was planted at the corners of the mound.
- 1895 - I. C. Christlieb, McLeod County Surveyor, set a 2 1/2" square iron monument to mark the corner.
- 1975 - Willard Pellinen, McLeod County Surveyor, found the 2 1/2" square iron monument about 2 feet below the road surface and set a McLeod County cast iron monument directly above it. Reference ties were set. The measured distance to the north quarter corner of Section 11 was about 1/2 foot longer than Christlieb's distance and the measured distance to the east quarter corner of Section 11 was about 1 foot longer than Christlieb's distance.
- 1990 - R. C. Jones, Registered Land Surveyor with Mn/DOT, found the McLeod County cast iron monument about 4" below the road surface. All but one of the reference ties was recovered.

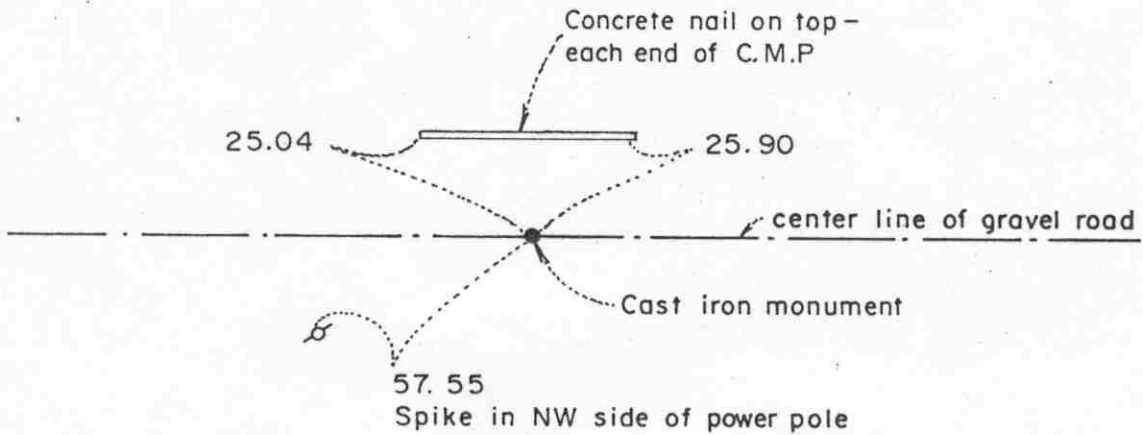
The cast iron monument is accepted as the corner location because the 2 1/2" square iron monument directly below it was probably set according to evidence of the original Public Land Survey corner. The cast iron monument is located at the centerline of a north/south road and at the centerline of a road to the west.

For additional information, contact the Mn/DOT Surveys Section at Willmar, Mn 56201.

# Certificate of Location of Government Corner



SKETCH OF REFERENCE TIES  
(NO SCALE)



Statement of evidence relative to this corner location on sheet 2

I hereby certify that this document was prepared by me or under my direct supervision.

Willard Pellinen  
 Willard Pellinen  
 McLeod County Surveyor  
 License No. 9626  
 Date June 22, 1987.

OFFICE OF THE COUNTY RECORDER  
MCLEOD COUNTY, MINNESOTA.

I hereby certify that this document was filed in this office at 8 o'clock A. M. on the 18th day of October, 19 88.

Carmen Ostlie, County Recorder  
 By \_\_\_\_\_, Deputy  
 Document No. 225078

## Certificate of Location of Government Corner

This corner was established by the Government in 1855 and was monumented by a wood post in a mount of earth.

In 1895, I.C.Christlieb, county surveyor, re-monumented Collins Township and set a  $2\frac{1}{2}$  inch by  $1\frac{1}{2}$  inch by 4 foot long iron monument at this corner one half way between the section corners.

On July 9, 1980, we found the monument set by Christlieb down 3 feet below the road surface. We set a McLeod County cast iron monument over the found monument and took reference ties.

This is within half a foot of being on a split between the section corners.

We feel the monument set by Christlieb has perpetuated the location of the original government corner.

# CERTIFICATE OF LOCATION OF GOVERNMENT CORNER

East Quarter Corner of Section 12, Township 115 N, Range 30 W, 5th P.M.

STATE OF MINNESOTA, County of McLeod

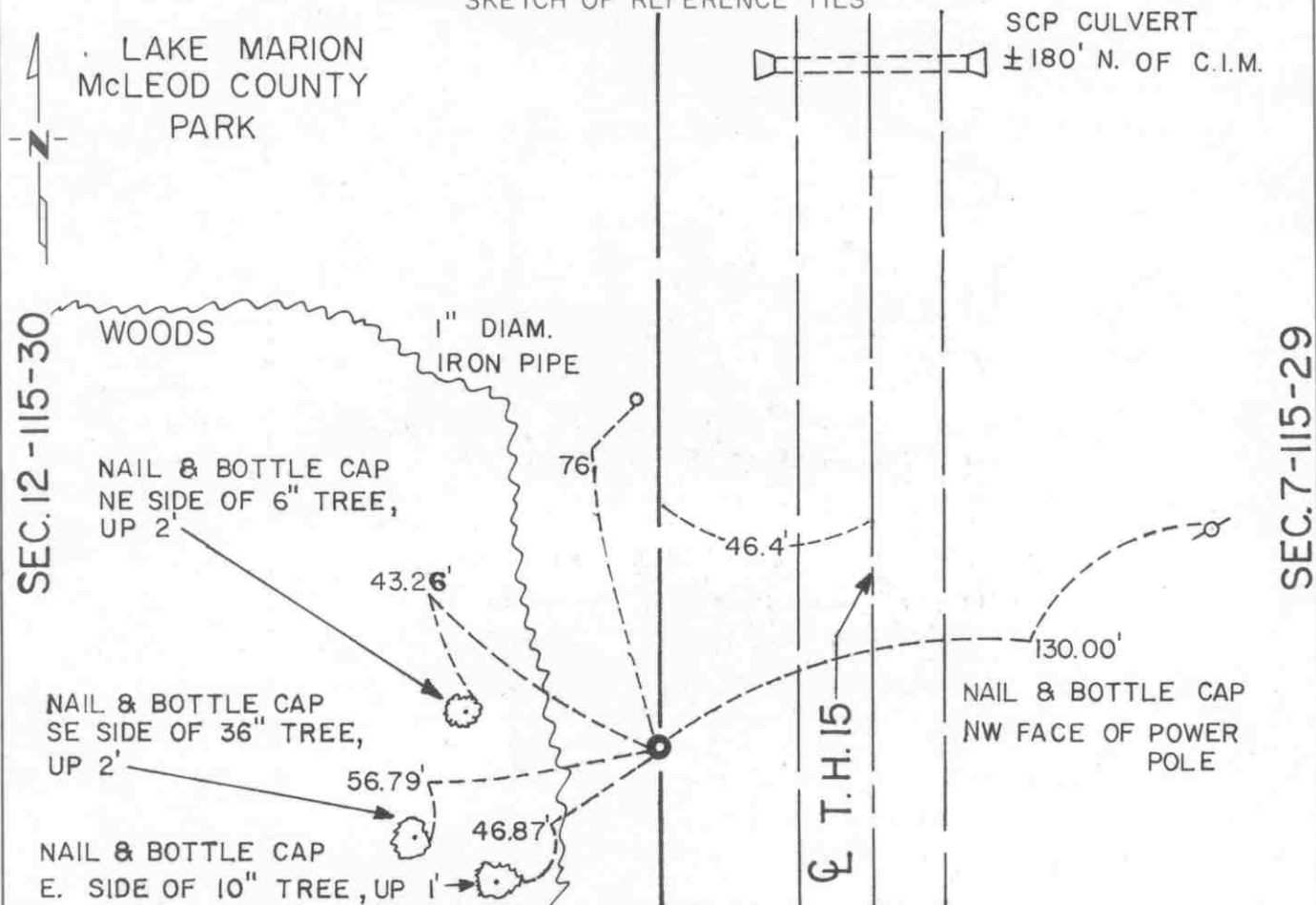
At the corner location shown on the sketch:

On June 13, 1991 found a cast iron monument about 1" below the ground surface

left monument as found,  lowered monument,  removed monument (explain)

On \_\_\_\_\_ placed a \_\_\_\_\_

SKETCH OF REFERENCE TIES



Statement of evidence relative to this corner location is on back of page.

I hereby certify that this document and the data contained herein was prepared by me or under my direct supervision.

Robert Jones  
SIGNATURE

8-19-91  
DATE

Registration No. 11864

Land Surveyor,  Professional Engineer

County Surveyor,  County Engineer

OFFICE OF THE COUNTY RECORDER  
County of McLeod

I hereby certify that this document was filed in the Co. Recorders office at 2 P .M. on the 18th day of Sept A.D., 1991

County Recorder Carmen Ostlie

By \_\_\_\_\_, Deputy

DOCUMENT NO. 241022

Statement of Evidence:

East Quarter Corner Section 12, T 115 N, R 30 W

- 1855 - The original Public Land Survey of the township line was completed by John Ryan. A wood post was set in a dirt mound to mark the corner. Reference was made to two bearing trees.
- 1896 - I. C. Christlieb, McLeod County Surveyor, set an iron monument to mark the corner.
- 1941 - The Minnesota Highway Department right of way map shows the corner to be 46.4 feet west of T.H. 15 P.O.T. 882+87.0, which was at the centerline of a north/south road and in line with a fence to the east.
- 1942 - All evidence of the corner was probably destroyed when T.H. 15 was graded.
- 1969 - Dickman Knutson, McLeod County Surveyor, found an iron pin 46.4 feet west of T.H. 15 P.O.T. 882+87.0. The iron pin was replaced with a McLeod County cast iron monument.
- 1991 - R. C. Jones, Registered Land Surveyor with Mn/DOT, found the cast iron monument about 1" below ground.

The cast iron monument is accepted as the corner location because it is 46.22 feet west of T.H. 15 P.O.T. 882+86.41, which fits the right of way map location very closely.

For additional information, contact the Mn/DOT Surveys Section at Willmar, Mn 56201.

# CERTIFICATE OF LOCATION OF GOVERNMENT CORNER

Northeast Corner of Section 12, Township 115 N, Range 30 W, 5th P.M.

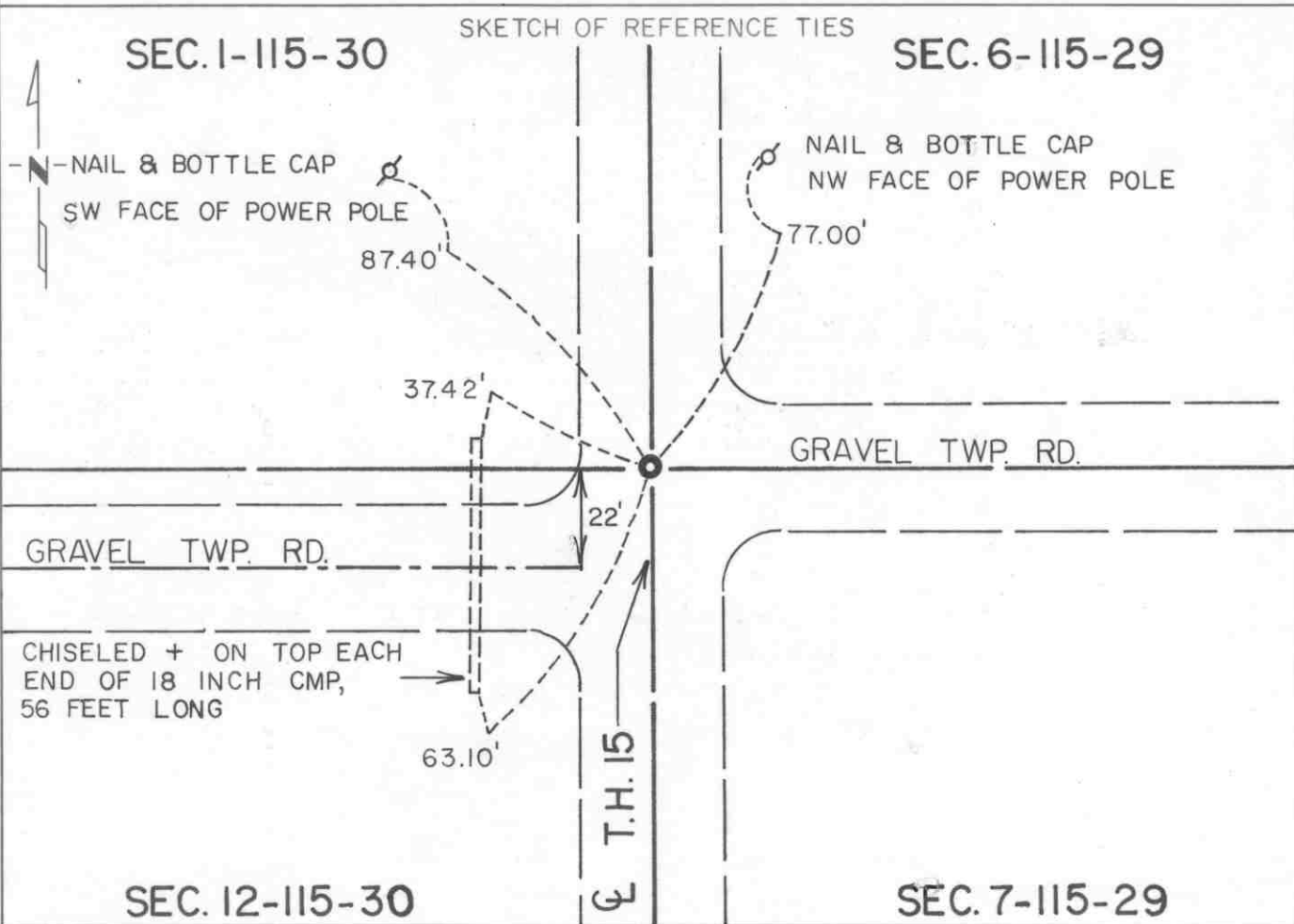
STATE OF MINNESOTA, County of McLeod

At the corner location shown on the sketch:

On Apr. 13, 1990 found a nail and disc at the road surface  
DATE

left monument as found,  lowered monument,  removed monument (explain)

On \_\_\_\_\_ placed a \_\_\_\_\_  
DATE



Statement of evidence relative to this corner location is on back of page.

I hereby certify that this document and the data contained herein was prepared by me or under my direct supervision.

Robert Jones  
SIGNATURE

8-19-91  
DATE

Registration No. 11864

Land Surveyor,  Professional Engineer

County Surveyor,  County Engineer

OFFICE OF THE COUNTY RECORDER  
County of McLeod

I hereby certify that this document was filed in the Co. Recorders office at 2 P.M. on the 18th day of Sept A.D., 1991

County Recorder Carmen Ostlie

By \_\_\_\_\_, Deputy

DOCUMENT NO. 241021

Statement of Evidence:

Northeast Corner Section 12, T 115 N, R 30 W

- 1855 - The original Public Land Survey of the township line was completed by John Ryan. A wood post was set over a deposit of charcoal in a dirt mound. Trenches and pits were dug to build the mound. Osage orange was planted at the corners of the mound.
- 1896 - I. C. Christlieb, McLeod County Surveyor, set an iron monument at this corner.
- 1941 - The Minnesota Highway Department right of way map shows the corner to be at T.H. 15 P.O.T. 909+32.0, which was at the intersection of the centerline of a north/south road with the centerline of a road to the east, and in line with a fence line to the west.
- 1942 - All evidence of the corner was probably destroyed when T.H. 15 was graded.
- 1969 - Dickman Knutson, McLeod County Surveyor, found an iron pin on the centerline of T.H. 15 at P.O.T. 909+32.0 and set reference ties.
- 1989 - Willard Pellinen, McLeod County Surveyor, found a nail and disc at the surface of the highway and set additional reference ties.
- 1990 - R. C. Jones, Registered Land Surveyor with Mn/DOT, found the nail and disc at the surface of the highway and also all the reference ties set in 1989.

The nail and disc is accepted as the corner location because it was found to be 0.21 feet west of T.H. 15 P.O.T. 909+36.86, which substantially fits the right of way map location, and it is in line with the centerline of a township road to the east. There is no longer a fence line to the west.

For additional information, contact the Mn/DOT Surveys Section at Willmar, Mn 56201.

# CERTIFICATE OF LOCATION OF GOVERNMENT CORNER

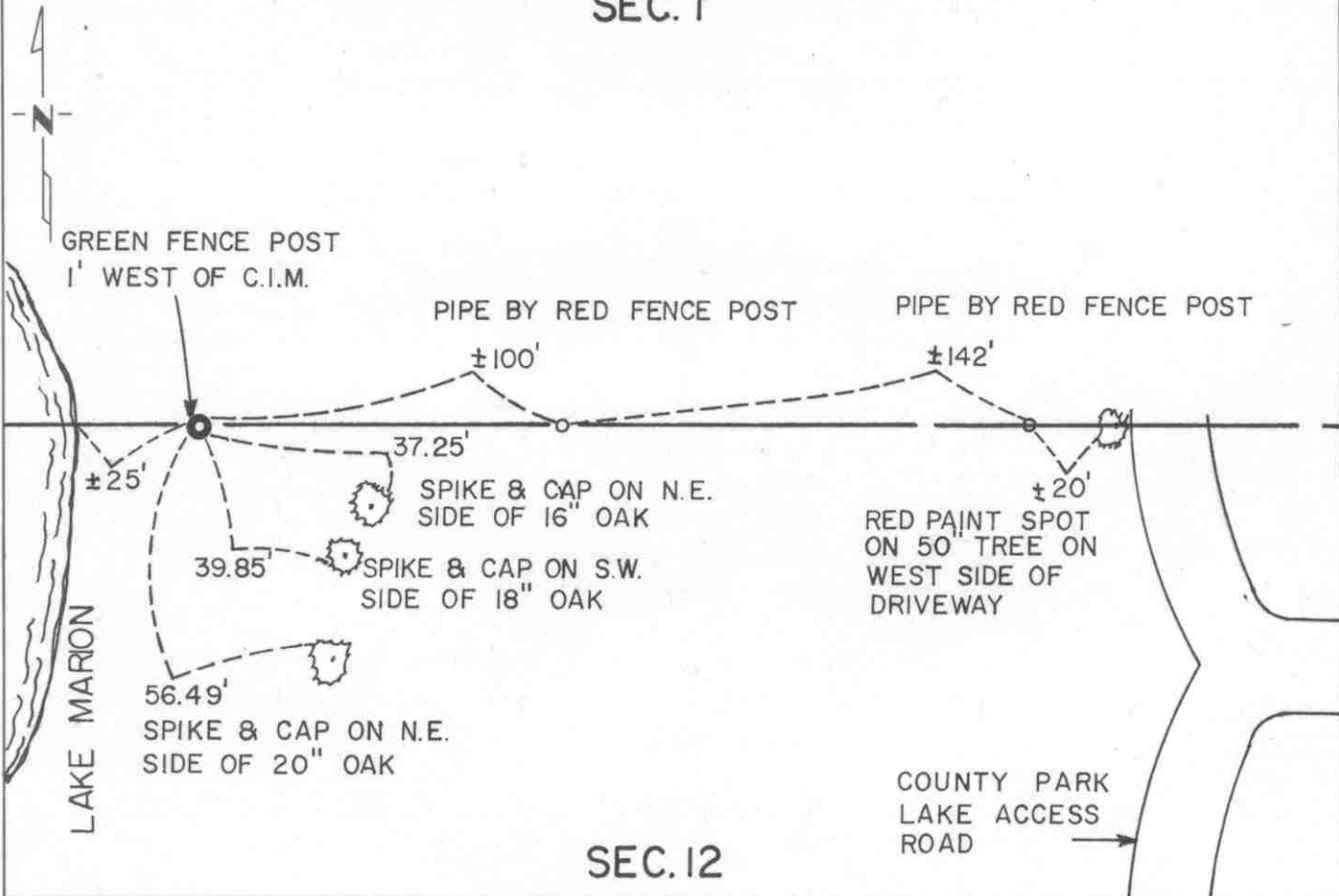
Witness Corner to the  
North Quarter \_\_\_\_\_ Corner of Section 12, Township 115 N, Range 30 W, 5 th P.M.

STATE OF MINNESOTA, County of McLeod

At the corner location shown on the sketch:

- On Sept. 5, 1991 found a cast iron monument at ground surface  
DATE
- left monument as found,  lowered monument,  removed monument (explain)
- On \_\_\_\_\_ placed a \_\_\_\_\_  
DATE

## SKETCH OF REFERENCE TIES SEC. 1



## SEC. 12

Statement of evidence relative to this corner location is on back of page.

I hereby certify that this document and the data contained herein was prepared by me or under my direct supervision.

Kent Gano 9-10-91  
SIGNATURE DATE

Registration No. 11864  
 Land Surveyor,  Professional Engineer  
 County Surveyor,  County Engineer

OFFICE OF THE COUNTY RECORDER  
County of McLeod

I hereby certify that this document was filed in the Co. Recorders office at 2 P.M. on the 18th day of Sept A.D., 1991

County Recorder Carmen O'Brien  
By \_\_\_\_\_, Deputy  
DOCUMENT NO. 241023



Statement of Evidence:      Witness Corner to North Quarter Corner  
   Section 12, T 115 N, R 30 W

1855 -      The original Public Land Survey was completed by Thomas Simpson. A wood post was set over a charred stake in a dirt mound to mark the north quarter corner of the section. A trench and pits were dug to build the mound. Osage orange was planted at the northeast and southwest corners of the mound.

There is no record evidence to show that anything has been set to mark the north quarter corner of the section since the original survey. Presently, it is difficult to visualize that the quarter corner could have been set in the original survey, unless Lake Marion was nearly dried up in 1855.

1975 -      Dickman Knutson, McLeod County Surveyor, set an iron pin on the line between the northwest and northeast corners of the section on the east bank of Lake Marion. It was in line with a fence line to the east.

1979 -      Dickman Knutson replaced the iron pin with a McLeod County cast iron monument.

1990 -      R. C. Jones, Registered Land Surveyor with Mn/DOT, found the cast iron monument at the surface of the ground. It was located on top of a 10 foot high bank about 30 feet east of the waterline of Lake Marion. It was very nearly on line with a fence line and power line to the east.

1991 -      Matt Schlagel, Land Surveyor in Training with Mn/DOT, recovered the cast iron monument as described above. It was tied into the McLeod County Coordinate System.

The cast iron monument was found to be on the line between section corners and 822.82 feet east of the lost location for the north quarter corner of the section, which is in the middle of Lake Marion.

For additional information, contact the Mn/DOT Surveys Section in Willmar, Mn 56201.